

CITY OF ROCKWALL

2025 Annual Drinking Water Quality Report

(Annual Water Quality Report for the period of January 1 to December 31, 2025)

PWS ID Number TX1990001

Purpose of Report

This report is intended to provide you with important information about your drinking water and the efforts made by the water system to provide safe drinking water.

For more information regarding this report contact:

Shon Bellah, Water / Wastewater Manager

Phone (972) 771-7730

Este reporte incluye información importante sobre el agua para tomar.
Para asistencia en español, favor de llamar al telefono (972) 771-7700.

Public Participation Opportunities

The Rockwall City Council meets on the 1st and 3rd Monday of every month at
Rockwall City Hall

Time: 6:00 PM

Location: 385 South Goliad

To learn about future public meetings, visit www.rockwall.com



Information about your Drinking Water

The sources of drinking water (both tap water and bottled water) include rivers, lakes, streams, ponds, reservoirs, springs, and wells. As water travels over the surface of the land or through the ground, it dissolves naturally occurring minerals and, in some cases, radioactive material, and can pick up substances resulting from the presence of animals or from human activity.

Drinking water, including bottled water, may reasonably be expected to contain at least small amounts of some contaminants. The presence of contaminants does not necessarily indicate that water poses a health risk. More information about contaminants and potential health effects can be obtained by calling the Environmental Protection Agency's (EPA) Safe Drinking Water Hotline at (800) 426-4791.

Contaminants that may be present in source water include:

- Microbial contaminants, such as viruses and bacteria, which may come from sewage treatment plants, septic systems, agricultural livestock operations, and wildlife.
- Inorganic contaminants, such as salts and metals, which can be naturally-occurring or result from urban storm water runoff, industrial or domestic wastewater discharges, oil and gas production, mining, or farming.
- Pesticides and herbicides, which may come from a variety of sources such as agriculture, urban storm water runoff, and residential uses.
- Organic chemical contaminants, including synthetic and volatile organic chemicals, which are by-products of industrial processes and petroleum production, and can also come from gas stations, urban storm water runoff, and septic systems.
- Radioactive contaminants, which can be naturally-occurring or be the result of oil and gas production and mining activities.

In order to ensure that tap water is safe to drink, EPA prescribes regulations which limit the amount of certain contaminants in water provided by public water systems. FDA regulations establish limits for contaminants in bottled water which must provide the same protection for public health.

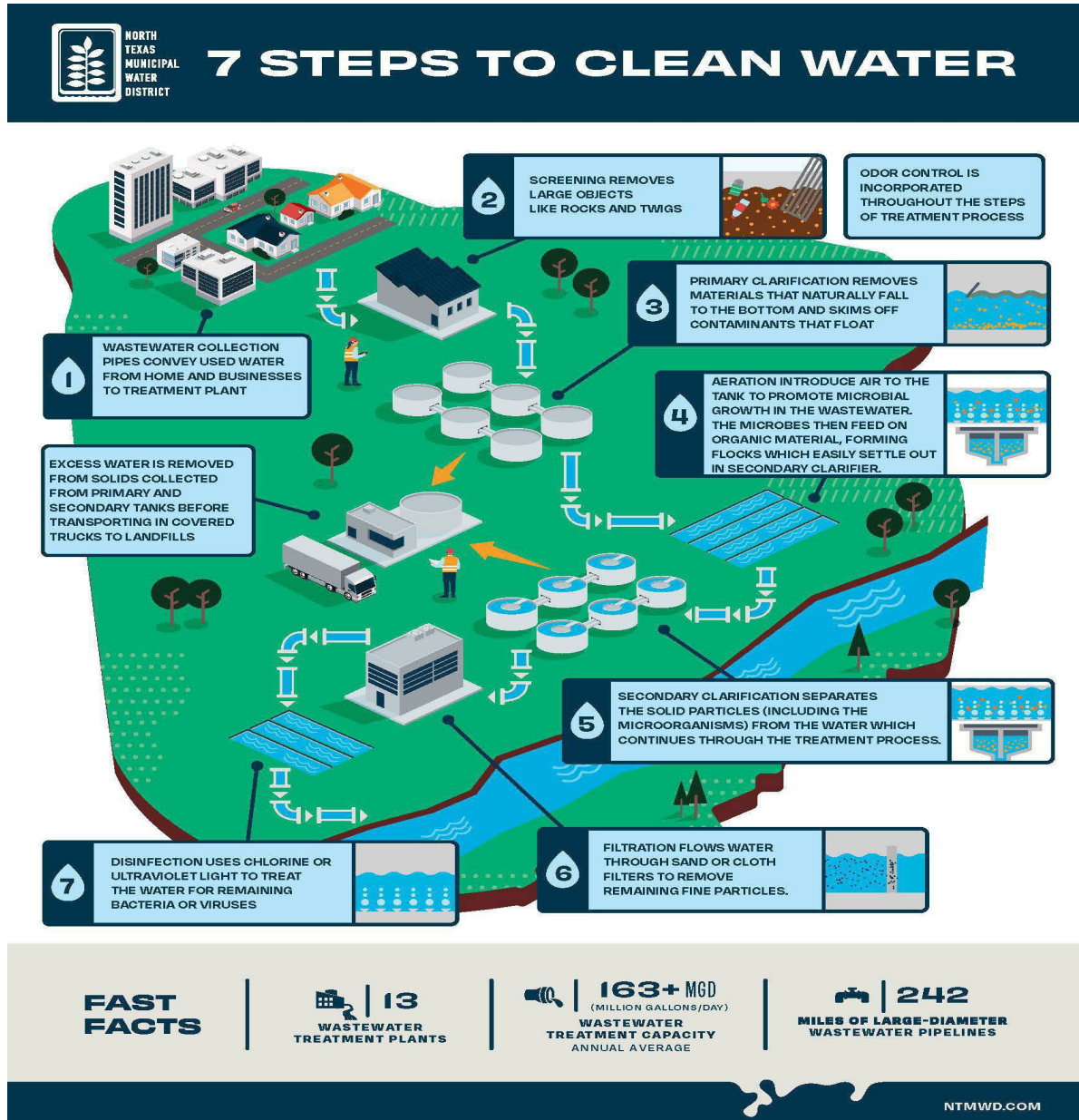
Contaminants may be found in drinking water that may cause taste, color, or odor problems. These types of problems are not necessarily causes for health concerns. For more information on taste, odor, or color of drinking water, please contact the system's business office.

You may be more vulnerable than the general population to certain microbial contaminants, such as *Cryptosporidium*, in drinking water. Infants, some elderly, or immunocompromised persons such as those undergoing chemotherapy for cancer; persons who have undergone organ transplants; those who are undergoing treatment with steroids; and people with HIV/AIDS or other immune system disorders, can be particularly at risk from infections. You should seek advice about drinking water from your physician or health care providers. Additional guidelines on appropriate means to lessen the risk of infection by *Cryptosporidium* are available from the Safe Drinking Water Hotline (800-426-4791).

If present, elevated levels of lead can cause serious health problems, especially for pregnant women and young children. Lead in drinking water is primarily from materials and components associated with service lines and home plumbing. We are responsible for providing high quality drinking water, but we cannot control the variety of materials used in plumbing components. When your water has been sitting for several hours, you can minimize the potential for lead exposure by flushing your tap for 30 seconds to 2 minutes before using water for drinking or cooking. If you are concerned about lead in your water, you may wish to have your water tested. Information on lead in drinking water, testing methods, and steps you can take to minimize exposure is available from the Safe Drinking Water Hotline or at <http://www.epa.gov/safewater/lead>.

Where do we get our drinking water?

The City of Rockwall purchases treated water from North Texas Municipal Water District (TX0430044) from the Wylie Water Treatment Plant. The water is obtained from surface water sources. The water comes from the following Reservoirs: Lavon located in Collin County, Jim Chapman located in Hopkins and Delta Counties, Texoma located in Grayson County, Tawakoni located in Hunt, Rains, and Van Zandt Counties and East Fork Raw Water Supply Project (Wetland) located in Kaufman County.



TCEQ completed a Source Water Susceptibility for all drinking water systems that own their sources. This report describes the susceptibility and types of constituents that may come into contact with the drinking water source based on human activities and natural conditions. The system(s) from which we purchase our water received the assessment report. For more information on source water assessments and protection efforts at our system contact NTMWD Environmental Services Department at (972) 442-5405 or environmental.info@ntmwd.com.

Further details about sources and source-water assessments are available in Drinking Water Watch at <https://dvw.tceq.texas.gov/>

The following tables contain scientific terms and measures, some of which may require explanation.

Definitions and Abbreviations:

Action Level:	The concentration of a contaminant which, if exceeded, triggers treatment or other requirements which a water system must follow.
Avg:	Regulatory compliance with some MCLs are based on running annual average of monthly samples.
Level 1 Assessment:	A Level 1 assessment is a study of the water system to identify potential problems and determine (if possible) why total coliform bacteria have been found in our water system.
Level 2 Assessment:	A Level 2 assessment is a very detailed study of the water system to identify potential problems and determine (if possible) why an E. coli MCL violation has occurred and/or why total coliform bacteria have been found in our water system on multiple occasions.
Maximum Contaminant Level or MCL:	The highest level of a contaminant that is allowed in drinking water. MCLs are set as close to the MCLGs as feasible using the best available treatment technology.

Maximum Contaminant Level Goal or MCLG:	The level of a contaminant in drinking water below which there is no known or expected risk to health. MCLGs allow for a margin of safety.
Maximum residual disinfectant level or MRDL:	The highest level of a disinfectant allowed in drinking water. There is convincing evidence that addition of a disinfectant is necessary for control of microbial contaminants.
Maximum residual disinfectant level goal or	The level of a drinking water disinfectant below which there is no known or expected risk to health.
MRDLG:	MRDLGs do not reflect the benefits of the use of disinfectants to control microbial contaminants.
MFL:	million fibers per liter (a measure of asbestos)
mrem:	millirems per year (a measure of radiation absorbed by the body)
na:	not applicable.
NTU	nephelometric turbidity units (a measure of turbidity)
pCi/L	picocuries per liter (a measure of radioactivity)
ppb:	micrograms per liter or parts per billion - or one ounce in 7,350,000 gallons of water.
ppm:	milligrams per liter or parts per million - or one ounce in 7,350 gallons of water.
ppq	parts per quadrillion, or picograms per liter (pg/L)
ppt	parts per trillion, or nanograms per liter (ng/L)
Treatment Technique or TT:	A required process intended to reduce the level of contaminants in drinking water.

City of Rockwall Water Quality Data for Year 2025

Coliform Bacteria

Maximum Contaminant Level Goal	Total Coliform Maximum Contaminant Level	Highest No. of Positive	Fecal Coliform or E. Coli Maximum Contaminant Level	Total No. of Positive E. Coli or Fecal Coliform Samples	Violation	Likely Source of Contamination
0	6 positive samples for 2025	2.32	0	0	No	Naturally present in the environment.

Coliforms are bacteria that are naturally present in the environment and are used as an indicator that other, potentially-harmful, bacteria may be present. Coliforms were found in more samples than allowed and this was a warning of potential problems. There are no additional required health effects violation notices. We found coliforms indicating the need to look for potential problems in water treatment or distribution. When this occurs, we are required to conduct assessment(s) to identify problems and to correct any problems that were found during these assessments. During the past year we were required to conduct Level 1 assessment(s). 1 Level 1 assessment(s) were completed. In addition, we were required to take 0 corrective actions and we completed 0 of these actions.

Regulated Contaminants

Disinfection By-Products	Collection Date	Highest Level Detected	Range of Levels Detected	MCLG	MCL	Units	Violation	Likely Source of Contamination
Total Haloacetic Acids (HAA5)	2025	31	20.5-31	No goal for the total	60	ppb	No	By-product of drinking water disinfection.
Total Trihalomethanes (TTHM)	2025	55.9	28.6-55.9	No goal for the total	80	ppb	No	By-product of drinking water disinfection.
Bromate	2025	Levels lower than detect level	0-0	5	10	ppb	No	By-product of drinking water ozonation.

NOTE: Not all sample results may have been used for calculating the Highest Level Detected because some results may be part of an evaluation to determine where compliance sampling should occur in the future. TCEQ only requires one sample annually for compliance testing. For Bromate, compliance is based on the running annual average.

Inorganic Contaminants	Collection Date	Highest Level Detected	Range of Levels Detected	MCLG	MCL	Units	Violation	Likely Source of Contamination
Antimony	2025	Levels lower than detect level	0-0	6	6	ppb	No	Discharge from petroleum refineries; fire retardants; ceramics; electronics; solder; and test addition.
Arsenic	2025	1	1-1	0	10	ppb	No	Erosion of natural deposits; runoff from orchards; runoff from glass and electronics production wastes.
Barium	2025	0.055	0.038 - 0.055	2	2	ppm	No	Discharge of drilling wastes; discharge from metal refineries; erosion of natural deposits.
Beryllium	2025	Levels lower than detect level	0-0	4	4	ppb	No	Discharge from metal refineries and coal-burning factories; discharge from electrical, aerospace, and defense industries.

Cadmium	2025	Levels lower than detect level	0-0	5	5	ppb	No	Corrosion of galvanized pipes; erosion of natural deposits; discharge from metal refineries; runoff from waste batteries and paints.
Chromium	2025	Levels lower than detect level	0-0	100	100	ppb	No	Discharge from steel and pulp mills; erosion of natural deposits.
Cyanide	2025	56.0	47.0 - 56.0	0-0	200	ppb	No	Discharge from steel/metal factories; Discharge from plastics and fertilizer factories.
Fluoride	2025	0.492	0.352 - 0.492	4	4	ppm	No	Erosion of natural deposits; water additive which promotes strong teeth; discharge from fertilizer and aluminum factories.
Mercury	2025	Levels lower than detect level	0-0	2	2	ppb	No	Erosion of natural deposits; discharge from refineries and factories; runoff from landfills; runoff from cropland.
Nitrate (measured as Nitrogen)	2025	0.698	0.082 - 0.866	10	10	ppm	No	Runoff from fertilizer use; leaching from septic tanks; sewage; erosion of natural deposits.
Nitrate-Nitrite	2021	0.277	0.263-0.277	10	10	ppm	No	Runoff from fertilizer use; leaching from septic tanks; sewage; erosion of natural deposits.
Selenium	2025	Levels lower than detect level	0-0	50	50	ppb	No	Discharge from petroleum and metal refineries; erosion of natural deposits; discharge from mines.
Thallium	2025	Levels lower than detect level	0-0	0.5	2	ppb	No	Discharge from electronics, glass, and leaching from ore-processing sites; drug factories.
Nitrate Advisory: Nitrate in drinking water at levels above 10 ppm is a health risk for infants of less than six months of age. High nitrate levels in drinking water can cause blue baby syndrome. Nitrate levels may rise quickly for short periods of time because of rainfall or agricultural activity. If you are caring for an infant you should ask advice from your health care provider. Nitrate-Nitrites levels are required to be tested every 9 years.								

Radioactive Contaminants (tested every 9 years)	Collection Date	Highest Level Detected	Range of Levels Detected	MCLG	MCL	Units	Violation	Likely Source of Contamination
Beta/photon emitters	2024	5.3	5.3 - 5.3	0	50	pCi/L	No	Decay of natural and man-made deposits.
Gross alpha excluding radon and uranium	2024	Levels lower than detect level	0-0	0	15	pCi/L	No	Erosion of natural deposits.
Radium	2024	Levels lower than detect level	0-0	0	5	pCi/L	No	Erosion of natural deposits.

Synthetic organic contaminants including pesticides and herbicides	Collection Date	Highest Level Detected	Range of Levels Detected	MCLG	MCL	Units	Violation	Likely Source of Contamination
2, 4, 5 - TP (Silvex)	2025	Levels lower than detect level	0-0	50	50	ppb	No	Residue of banned herbicide.
2, 4 - D	2025	Levels lower than detect level	0-0	70	70	ppb	No	Runoff from herbicide used on row crops.
Alachlor	2025	Levels lower than detect level	0-0	0	2	ppb	No	Runoff from herbicide used on row crops.
Aldicarb	2025	Levels lower than detect level	0-0	1	3	ppb	No	Runoff from agricultural pesticide.
Aldicarb Sulfone	2025	Levels lower than detect level	0-0	1	2	ppb	No	Runoff from agricultural pesticide.

Aldicarb Sulfoxide	2025	Levels lower than detect level	0-0	1	4	ppb	No	Runoff from agricultural pesticide.
Atrazine	2025	0.1	0.1 - 0.1	3	3	ppb	No	Runoff from herbicide used on row crops.
Benzo (a) pyrene	2025	Levels lower than detect level	0-0	0	200	ppt	No	Leaching from linings of water storage tanks and distribution lines.
Carbofuran	2025	Levels lower than detect level	0-0	40	40	ppb	No	Leaching of soil fumigant used on rice and alfalfa.
Chlordane	2025	Levels lower than detect level	0-0	0	2	ppb	No	Residue of banned termiticide.
Dalapon	2025	Levels lower than detect level	0-0	200	200	ppb	No	Runoff from herbicide used on rights of way.
Di (2-ethylhexyl) adipate	2025	Levels lower than detect level	0-0	400	400	ppb	No	Discharge from chemical factories.
Di (2-ethylhexyl) phthalate	2025	Levels lower than detect level	0-0	0	6	ppb	No	Discharge from rubber and chemical factories.
Dibromochloropropane (DBCP)	2025	Levels lower than detect level	0-0	0	200	ppt	No	Runoff / leaching from soil fumigant used on soybeans, cotton, pineapples, and orchards.
Dinoseb	2025	Levels lower than detect level	0-0	7	7	ppb	No	Runoff from herbicide used on soybeans and vegetables.
Endrin	2025	Levels lower than detect level	0-0	2	2	ppb	No	Residue of banned insecticide.
Ethylene dibromide	2025	Levels lower than detect level	0-0	0	50	ppt	No	Discharge from petroleum refineries.
Heptachlor	2025	Levels lower than detect level	0-0	0	400	ppt	No	Residue of banned termiticide.
Heptachlor epoxide	2025	Levels lower than detect level	0-0	0	200	ppt	No	Breakdown of heptachlor.
Hexachlorobenzene	2025	Levels lower than detect level	0-0	0	1	ppb	No	Discharge from metal refineries and agricultural chemical factories.
Hexachlorocyclopentadiene	2025	Levels lower than detect level	0-0	50	50	ppb	No	Discharge from chemical factories.
Lindane	2025	Levels lower than detect level	0-0	200	200	ppt	No	Runoff / leaching from insecticide used on cattle, lumber, and gardens.
Methoxychlor	2025	Levels lower than detect level	0-0	40	40	ppb	No	Runoff / leaching from insecticide used on fruits, vegetables, alfalfa, and livestock.
Oxamyl [Vydate]	2025	Levels lower than detect level	0-0	200	200	ppb	No	Runoff / leaching from insecticide used on apples, potatoes, and tomatoes.
Pentachlorophenol	2025	Levels lower than detect level	0-0	0	1	ppb	No	Discharge from wood preserving factories.
Picloram	2025	Levels lower than detect level	0-0	500	500	ppb	No	Herbicide runoff.

Simazine	2025	Levels lower than detect level	0-0	4	4	ppb	No	Herbicide runoff.
Toxaphene	2025	Levels lower than detect level	0-0	0	3	ppb	No	Runoff / leaching from insecticide used on cotton and cattle.

Volatile Organic Contaminants	Collection Date	Highest Level Detected	Range of Levels Detected	MCLG	MCL	Units	Violation	Likely Source of Contamination
1, 1, 1 - Trichloroethane	2025	Levels lower than detect level	0-0	200	200	ppb	No	Discharge from metal degreasing sites and other factories.
1, 1, 2 - Trichloroethane	2025	Levels lower than detect level	0-0	3	5	ppb	No	Discharge from industrial chemical factories.
1, 1 - Dichloroethylene	2025	Levels lower than detect level	0-0	7	7	ppb	No	Discharge from industrial chemical factories.
1, 2, 4 - Trichlorobenzene	2025	Levels lower than detect level	0-0	70	70	ppb	No	Discharge from textile-finishing factories.
1, 2 - Dichloroethane	2025	Levels lower than detect level	0-0	0	5	ppb	No	Discharge from industrial chemical factories.
1, 2 - Dichloropropane	2025	Levels lower than detect level	0-0	0	5	ppb	No	Discharge from industrial chemical factories.
Benzene	2025	Levels lower than detect level	0-0	0	5	ppb	No	Discharge from factories; leaching from gas storage tanks and landfills.
Carbon Tetrachloride	2025	Levels lower than detect level	0-0	0	5	ppb	No	Discharge from chemical plants and other industrial activities.
Chlorobenzene	2025	Levels lower than detect level	0-0	100	100	ppb	No	Discharge from chemical and agricultural chemical factories.
Dichloromethane	2025	Levels lower than detect level	0-0	0	5	ppb	No	Discharge from pharmaceutical and chemical factories.
Ethylbenzene	2025	Levels lower than detect level	0-0	0	700	ppb	No	Discharge from petroleum refineries.
Styrene	2025	Levels lower than detect level	0-0	100	100	ppb	No	Discharge from rubber and plastic factories; leaching from landfills.
Tetrachloroethylene	2025	Levels lower than detect level	0-0	0	5	ppb	No	Discharge from factories and dry cleaners.
Toluene	2025	Levels lower than detect level	0-0	1	1	ppm	No	Discharge from petroleum factories.
Trichloroethylene	2025	Levels lower than detect level	0-0	0	5	ppb	No	Discharge from metal degreasing sites and other factories.
Vinyl Chloride	2025	Levels lower than detect level	0-0	0	2	ppb	No	Leaching from PVC piping; discharge from plastics factories.

Xylenes	2025	Levels lower than detect level	0-0	10	10	ppm	No	Discharge from petroleum factories; discharge from chemical factories.
cis - 1, 2 - Dichloroethylene	2025	Levels lower than detect level	0-0	70	70	ppb	No	Discharge from industrial chemical factories.
o - Dichlorobenzene	2025	Levels lower than detect level	0-0	600	600	ppb	No	Discharge from industrial chemical factories.
p - Dichlorobenzene	2025	Levels lower than detect level	0-0	75	75	ppb	No	Discharge from industrial chemical factories.
trans - 1, 2 - Dichloroethylene	2025	Levels lower than detect level	0-0	100	100	ppb	No	Discharge from industrial chemical factories.

Turbidity

	Limit (Treatment Technique)	Level Detected	Violation	Likely Source of Contamination
Highest single measurement	1 NTU	0.29	No	Soil runoff.
Lowest monthly percentage (%) meeting limit	0.3 NTU	100%	No	Soil runoff.

NOTE: Turbidity is a measurement of the cloudiness of the water caused by suspended particles. We monitor it because it is a good indicator of water quality and the effectiveness of our filtration.

Maximum Residual Disinfectant Level

Disinfectant Type	Year	Average Level of Quarterly Data	Lowest Result of Single Sample	Highest Result of Single Sample	MRDL	MRDLG	Units	Source of Chemical
Chlorine Residual (Chloramines)	2025	2.39	1.14	3.52	4.00	<4.0	ppm	Disinfectant used to control microbes.
Chlorine Dioxide	2025	0.050	0	0.63	0.80	0.80	ppm	Disinfectant.
Chlorite	2025	0.176	0	0.90	1.00	N/A	ppm	Disinfectant.

NOTE: Water providers are required to maintain a minimum chlorine disinfection residual level of 0.5 parts per million (ppm) for systems disinfecting with chloramines and an annual average chlorine disinfection residual level of between 0.5 ppm and 4 ppm.

Total Organic Carbon

The percentage of Total Organic Carbon (TOC) removal was measured each month and the system met all TOC removal requirements set.

Cryptosporidium and Giardia

Contaminants	Collection Date	Highest Level Detected	Range of Levels Detected	Units	Likely Source of Contamination
Cryptosporidium	2025	Levels lower than detect level	0-0	(Oo) Cysts/L	Human and animal fecal waste. Naturally present in the environment.
Giardia	2025	Levels lower than detect level	0-0	(Oo) Cysts/L	Human and animal fecal waste. Naturally present in the environment.

NOTE: Levels detected are for source water, not for drinking water. No cryptosporidium or giardia were found in drinking water.

Lead and Copper

Lead and Copper	Date Sampled	Action Level (AL)	90th Percentile	# Sites Over AL	Units	Violation	Likely Source of Contamination
Lead	2025	15	2.19	0	ppb	No	Corrosion of household plumbing systems; erosion of natural deposits.
Copper	2025	1.30	0.764	0	ppm	No	Erosion of natural deposits; leaching from wood preservatives; corrosion of household plumbing systems.

LEAD AND COPPER RULE: The Lead and Copper Rule protect public health by minimizing lead and copper levels in drinking water, primarily by reducing water corrosivity. Lead and Copper enter drinking water mainly from corrosion of plumbing materials containing lead and copper. ADDITIONAL HEALTH INFORMATION FOR LEAD: If present, elevated levels of lead can cause serious health problems, especially for pregnant women and young children. Lead in drinking water is primarily from materials and components associated with service lines and home plumbing. City of Rockwall is responsible for providing high quality drinking water but cannot control the variety of materials used in plumbing components. When your water has been sitting for several hours, you can minimize the potential for lead exposure by flushing your tap for 30 seconds to 2 minutes before using water for drinking or cooking. If you are concerned about lead in your water, you may wish to have your water tested. Information on lead in drinking water, testing methods, and steps you can take to minimize exposure is available from the Safe Drinking Water Hotline or at <http://www.epa.gov/safewater/lead>.

Unregulated Contaminants

Contaminants	Collection Date	Highest level Detected	Range of Levels Detected	Units	Likely Source of Contamination
Chloroform	2025	14.9	10.5-14.9	ppb	By-product of drinking water disinfection.
Bromoform	2025	3.7	1.42-3.7	ppb	By-product of drinking water disinfection.
Bromodichloromethane	2025	20.6	11.1-20.6	ppb	By-product of drinking water disinfection.
Dibromochloromethane	2025	16.4	7.52-16.4	ppb	By-product of drinking water disinfection.

NOTE: Bromoform, chloroform, bromodichloromethane, and dibromochloromethane are disinfection by-products. There is no maximum contaminant level for these chemicals at the entry point to distribution. These contaminants are included in the Disinfection By-Products TTHM compliance data.

Secondary and Other Constituents Not Regulated

Contaminants	Collection Date	Highest Level Detected	Range of Levels Detected	Units	Likely Source of Contamination
Aluminum	2025	Levels lower than detect level	0-0	ppm	Erosion of natural deposits.
Calcium	2025	61.3	31.2 - 61.3	ppm	Abundant naturally occurring element.
Chloride	2025	92.5	29.0 - 92.5	ppm	Abundant naturally occurring element; used in water purification; by-product of oil field activity.
Iron	2025	Levels lower than detect level	0-0	ppm	Erosion of natural deposits; iron or steel water delivery equipment or facilities.
Magnesium	2025	9.44	6.27 - 9.44	ppm	Abundant naturally occurring element.
Manganese	2025	0.002	0.002 - 0.002	ppm	Abundant naturally occurring element.

Nickel	2025	0.007	0.005 - 0.007	ppm	Erosion of natural deposits.
pH	2025	8.8	7.3 - 8.8	units	Measure of corrosivity of water.
Silver	2025	Levels lower than detect level	0-0	ppm	Erosion of natural deposits.
Sodium	2025	88.0	41.9 - 88.0	ppm	Erosion of natural deposits; by-product of oil field activity.
Sulfate	2025	147	84.7 - 147	ppm	Naturally occurring; common industrial by-product; byproduct of oil field activity.
Total Alkalinity as CaCO3	2025	138	43.6 - 138	ppm	Naturally occurring soluble mineral salts.
Total Dissolved Solids	2025	455	182 - 455	ppm	Total dissolved mineral constituents in water.
Total Hardness as CaCO3	2025	200	96.0 - 200	ppm	Naturally occurring calcium.
Zinc	2025	0.016	0.006 - 0.016	ppm	Moderately abundant naturally occurring element used in the metal industry.

Unregulated Contaminant Monitoring Rule (UCMR5)

PWSs are required to report UCMR results in the CCR when unregulated contaminants are found (i.e., measured at or above minimum reporting levels [MRLs]), and must report the average and range of the monitoring results for the report year. Additionally, PWSs are required to notify customers through Tier 3 Public Notification (PN) about the availability of all UCMR results no later than 12 months after they are known by the PWS. If timing and delivery requirements are met, systems may include their PN within the CCR, also known as annual drinking water quality report. EPA has resources for PWSs available on the CCR and PN Compliance help webpages.

Contaminants	Collection	Average Level	Range of Levels	MRL	Units	Likely Source of Contamination
PFBA	2025	0.0067	.0050-.0096	0.005	ug/L	Industrial processes, consumer products, and waste disposal.
PFBS	2025	0.0034	.00279-.0044	0.00279	ug/L	Consumer products and industrial processes.
PFHxA	2025	0.0046	.0035-.0063	0.0035	ug/L	Industrial products, textiles, and consumer products.
PFPeA	2025	0.0048	.0035-.0070	0.0035	ug/L	Industrial and consumer products.

Lead Service Line Inventory

The City of Rockwall has completed its service line inventory and determined through field investigations that no lead or lead status "unknown" service lines are in the system. To view and access the service line inventory report, go to <https://www.rockwall.com/documents/Water/Lead%20and%20Copper.pdf>

North Texas Municipal Water District has completed its service line inventory and determined through field investigations that no lead, galvanized requiring replacement, or lead status unknown service lines are in the system. To view and access the service line inventory, go to <https://www.ntmwd.com/200/Water-Quality>.

CURRENT WATERING RESTRICTIONS

- Summer (April 1 - October 31) - Spray irrigation with sprinklers or irrigation systems at each service address must be limited to no more than two days per week. Additionally, prohibit lawn irrigation watering from 10 a.m. to 6 p.m. Education should be provided that irrigation should only be used when needed, which is often less than twice per week, even in the heat of summer.
- Winter (November 1 - March 31) - Spray irrigation with sprinklers or irrigation systems at each service address must be limited to no more than one day per week with education that less than once per week (or not at all) is usually adequate.

Additional irrigation may be provided by hand-held hose with shutoff nozzle, use of dedicated irrigation drip zones, and/or soaker hose provided no runoff occurs. Many North Texas horticulturists have endorsed twice-weekly watering as more than sufficient for landscapes in the region, even in the heat of summer.

Water waste provisions aim to minimize unnecessary water use and include practices such as avoiding the use of irrigation systems that water impervious surfaces, refraining from outdoor watering during precipitation or freeze events, maintaining sprinkler systems to prevent water waste, and preventing excess water runoff or other obvious forms of water waste.

Rockwall residents are urged to follow these guidelines and remember that watering is not allowed between 10:00 am and 6:00 pm. This provides for the most efficient, cost-effective use of water purchased by customers. Use the [Water My Yard](#) program to better determine when and how much water to apply to your lawn. Learn more about water-efficient landscape principles, plants suited to our region's soil, climate, and precipitation at <http://www.txsmartscape.com/>.

The City of Rockwall appreciates the cooperation and sacrifices made to conserve water throughout the extreme periods of a drought.

DEAR REGISTERED TEXAS BOATER

What you can't see can damage your boat and harm Texas lakes. Zebra mussels are an invasive species that produce millions of microscopic larvae that can hide in your boat. Adults reach 1 ½ inches and attach to your boat's motor, hull and to other hard surfaces. Zebra mussels can seriously hamper your boat's performance and are devastating to our native plants, fish and wildlife. They also threaten our water supply. Learn more about zebra mussels at www.TexasInvasives.org.



HELLO ZEBRA MUSSELS, GOODBYE TEXAS LAKES

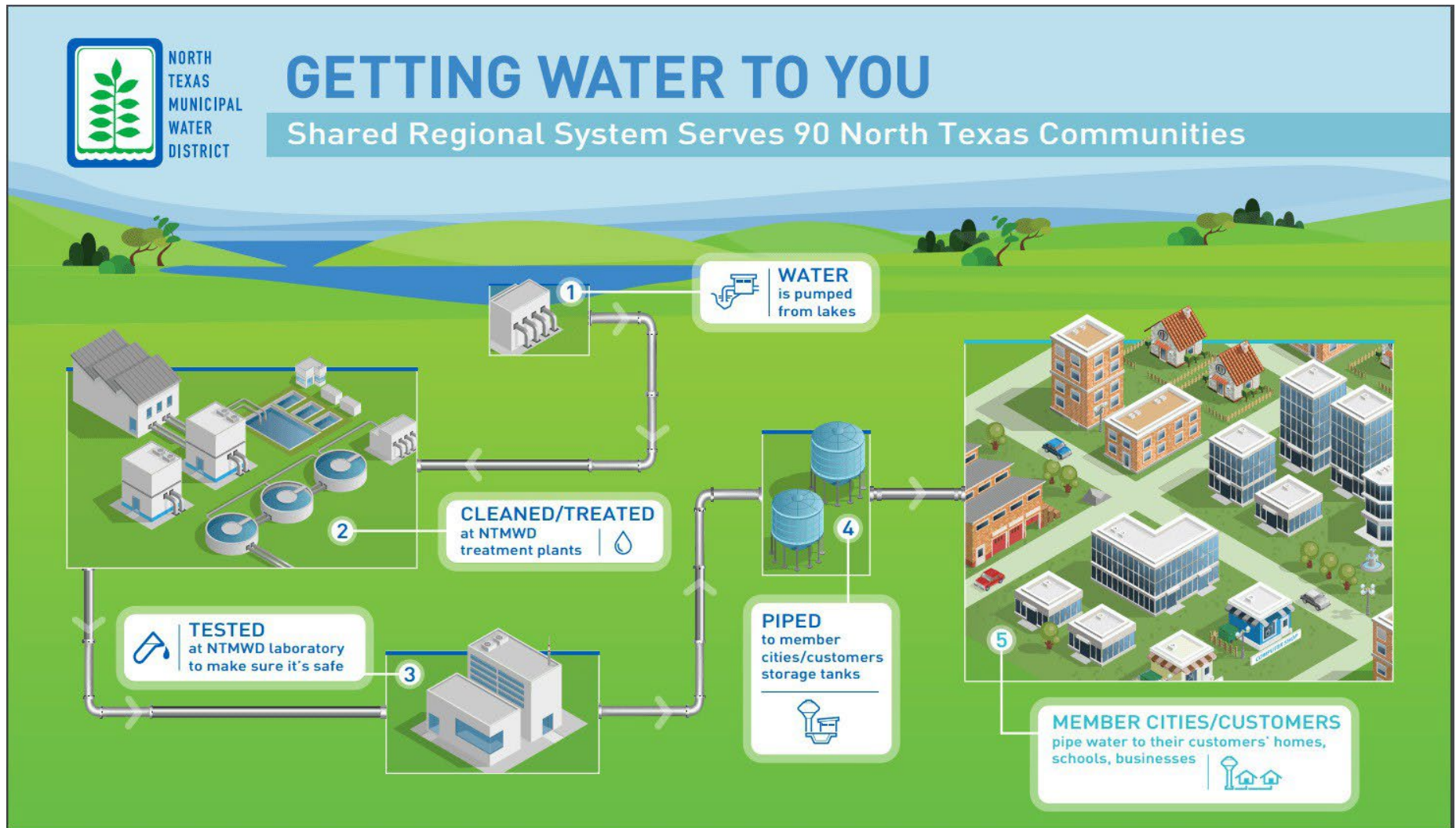
Thanks to the following Texas Parks and Wildlife campaign partners for helping spread the word, not the zebra mussels: North Texas Municipal Water District, Tarrant Regional Water District, Trinity River Authority, City of Dallas Water Utilities Department, Sabine River Authority, Canadian River Municipal Water Authority, San Jacinto River Authority, Lady Bird Johnson Wildflower Center, and Angelina and Neches River Authority.



NORTH
TEXAS
MUNICIPAL
WATER
DISTRICT

GETTING WATER TO YOU

Shared Regional System Serves 90 North Texas Communities



Ensuring Purity at Every Tap